



# MERCURY DISPLACEMENT INDUSTRIES, INC.

Post Office Box 710 - U.S. 12 East - Edwardsburg, Michigan 49112-0710

Phone (269) 663-8574 - Fax (269) 663-2924

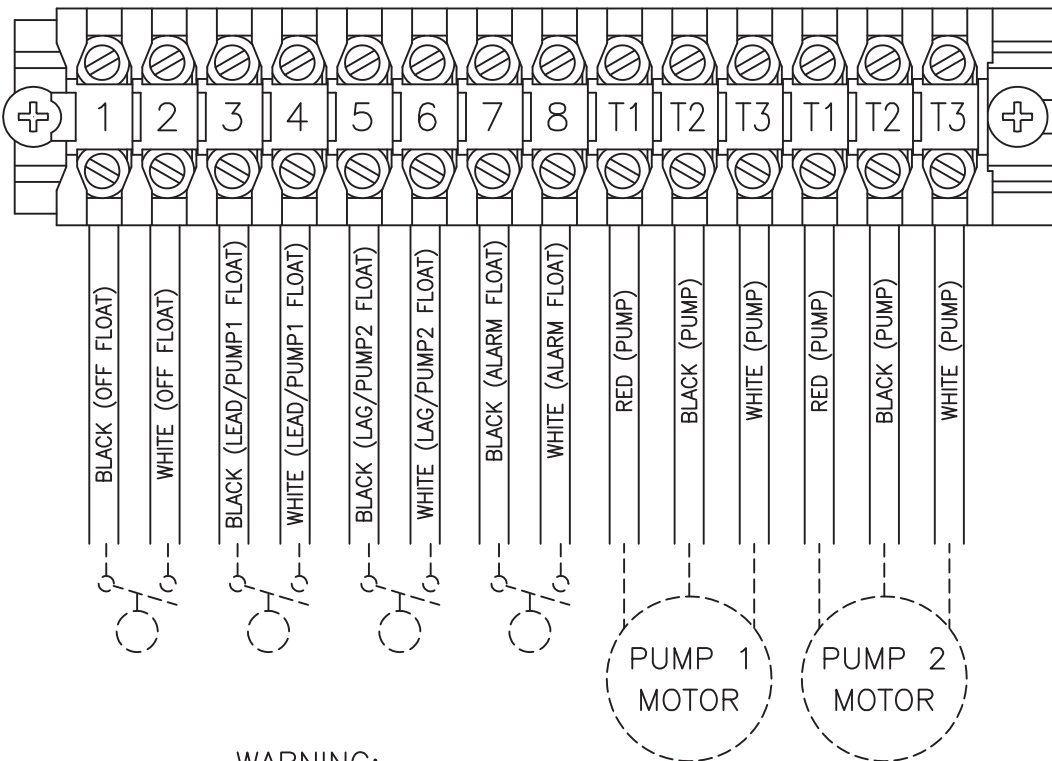
(800) 634-4077

## PANEL #: 50A516

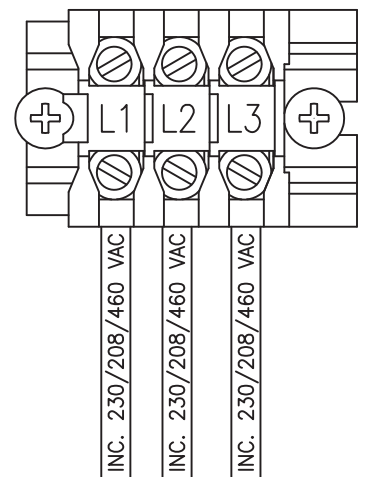
### CONNECTION DIAGRAM

REQUIRED TORQUE FOR TERMINAL BLOCK SCREWS IS 16 in-lbs.

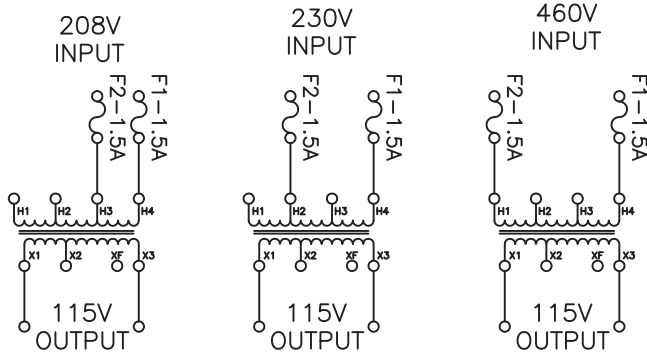
#### PUMP & FLOAT CONNECTIONS



#### INCOMING POWER CONNECTIONS



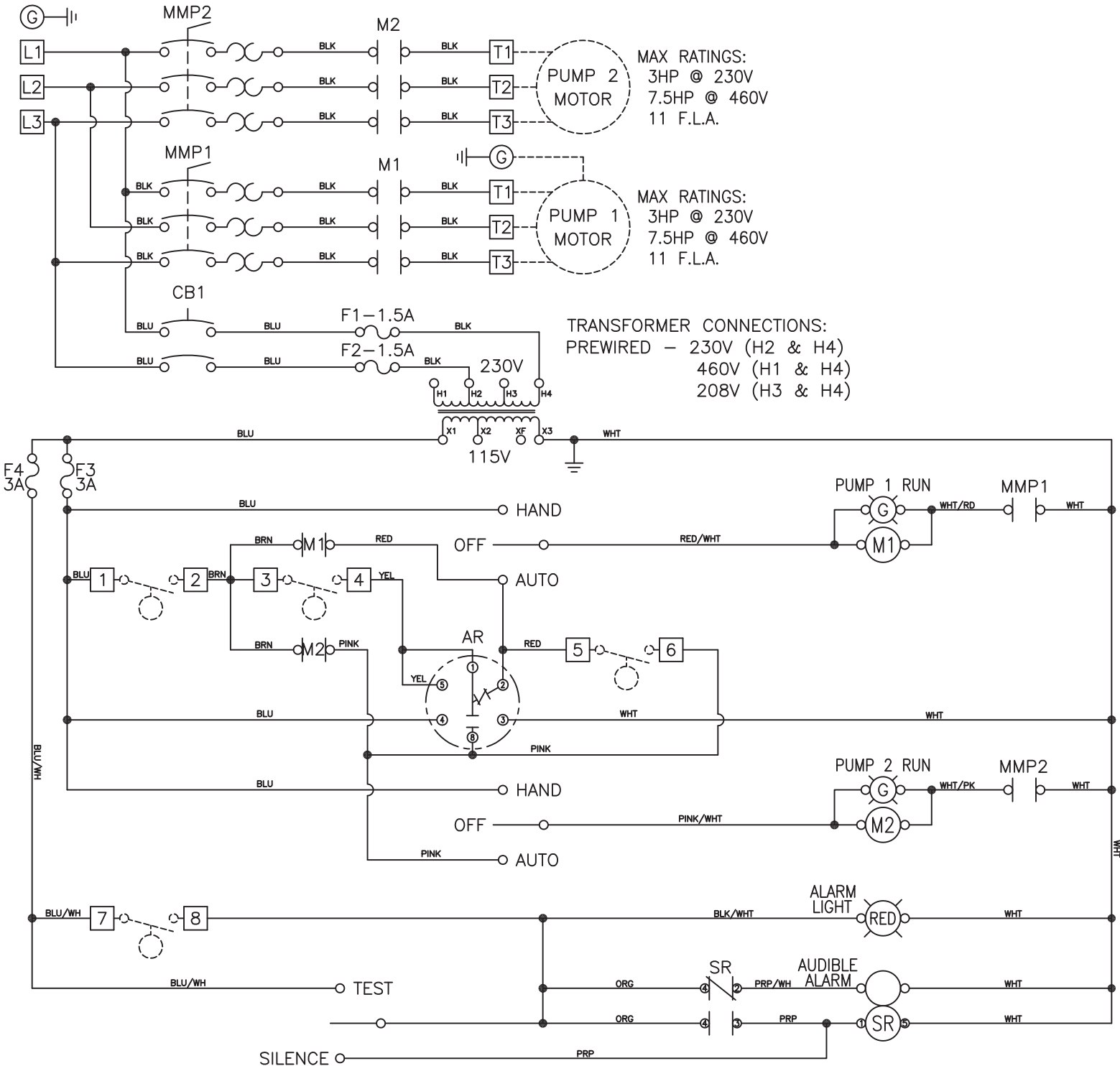
**WARNING:**  
 TRANSFORMER WIRES MUST BE CONFIGURED  
 AS PER THE INCOMING VOLTAGE. IT IS  
 PRE-WIRED FOR 230V.



Contactors - Relays - Switches

<http://www.mdious.com>

POWER CIRCUIT (3 WIRE SERVICE)  
230/460V - 3PH - 60Hz



- NOTES: FLOAT SWITCH TO BE RATED 2 AMP AT 120V MINIMUM.  
MAIN PANEL DISCONNECT MUST BE PROVIDED BY INSTALLER.  
TRANSFORMER IS PRE-WIRED FOR 230VAC PRIMARY, WHEN USING 460VAC  
PRIMARY CHANGE CONNECTIONS TO H1 AND H4.  
DASHED LINES INDICATE ITEMS NOT CONTAIN IN THE PANEL.  
REQUIRED TORQUE FOR TERMINAL BLOCK SCREWS IS 16 in-lbs.  
FIELD WIRING MUST BE A MINIMUM OF 60°C COPPER WIRE.