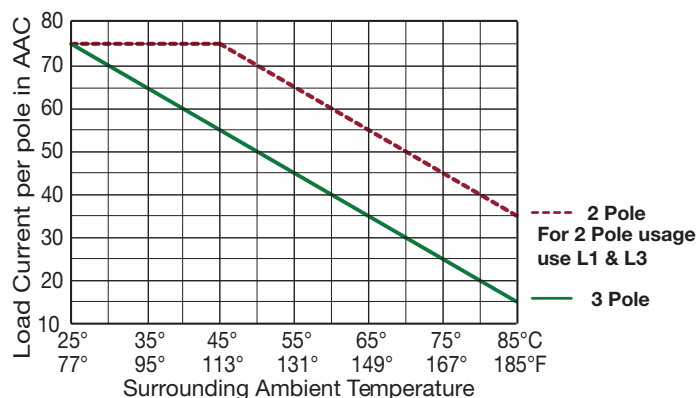


- CE

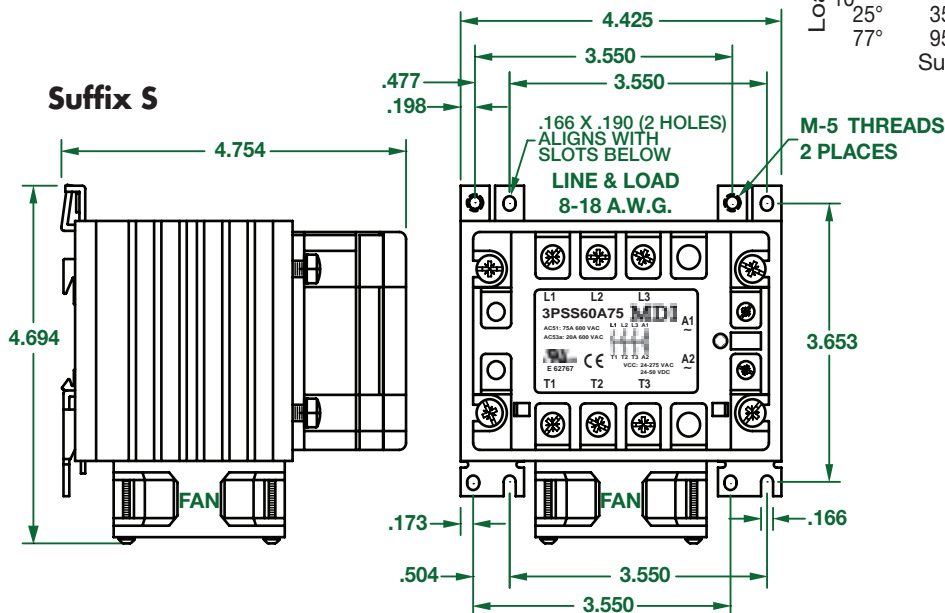
**CALUS**  
E 354129

A Solid State Relay family designed to switch various loads such as heating elements, motors and transformers. The relay is capable of switching voltages up to 600 VAC rms. The built-in varistor is for heavy industrial applications. For higher reliability and load cycle capability three semiconductor power units are bonded directly to the substrate.

All data specified at Ta=25°C	<b>3PSS60A75</b>	<b>3PSS60D75</b>
Control voltage range	24-275 VAC/24-50 VDC	4-32 VDC
Pick-up voltage	18 VAC/20 VDC	3.8 VDC
Drop-out voltage	9 VAC/DC	1.2 VDC
Input current	≤ 15 mA	≤ 23 mA
Response time pick-up (Power output = 50 Hz)	20 ms	10 ms
Response time drop-out (Power output = 50 Hz) e	30 ms	10 ms



\*For 2 Pole usage, use L1 & L3



**Includes Retro Fit Back Plate For direct replacement with standard 2 & 3 pole Mercury Relays. Using the same mounting holes.**

