



# MERCURY DISPLACEMENT INDUSTRIES, INC.

Post Office Box 710 - U.S. 12 East - Edwardsburg, Michigan 49112-0710

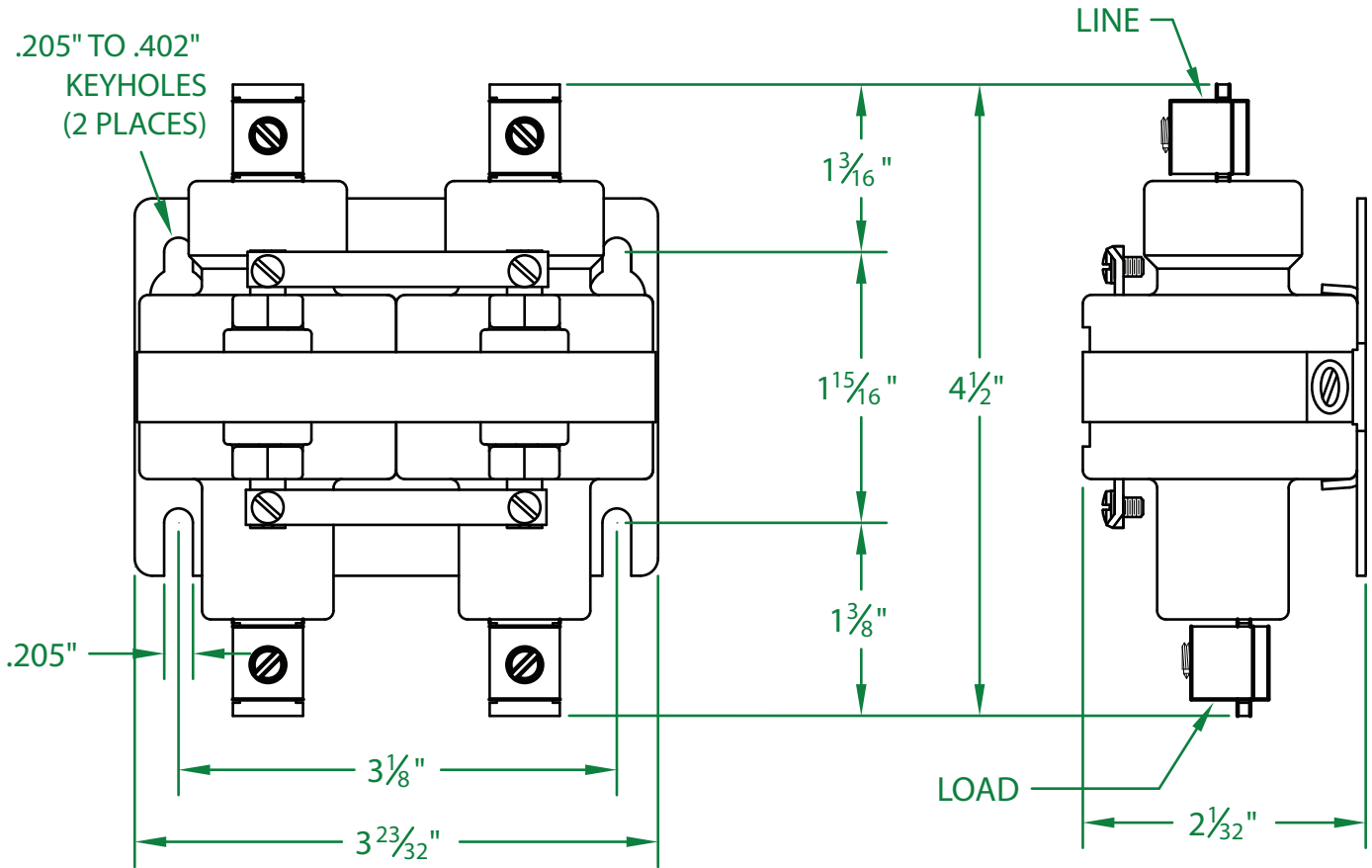
Phone (269) 663-8574 - Fax (269) 663-2924

(800) 634-4077



INDUSTRIAL CONTROL EQUIPMENT

## 260NC-125D-18



- \* CONTACT RESISTANCE .002 ohms
- \* DIELECTRIC WITHSTAND 2,500 VAC RMS
- \* OPERATE TIME 30 MILLISECONDS
- \* RELEASE TIME 35 MILLISECONDS
- \* RATINGS:  
 CONTACTS: 60 AMP @ 480 VAC  
 RESISTIVE OR GENERAL PURPOSE  
 COIL: 125 V.D.C.  
 RESISTANCE: 1,700 Ω  
 CURRENT: 74 mA  
 VA: 9.2      WATTAGE: 9.2

- \* TEMPERATURE RANGE -35° TO +85° C
- \* COIL TERMINALS #6 BINDING HEAD SCREWS  
TORQUE TO 7 IN-LB
- \* LOAD TERMINALS 2-8 AWG COMPRESSION TYPE  
TORQUE TO 45 IN-LB
- \* TWO POLE / SINGLE THROW
- \* STEEL STRAP (-18)
- \* MAGNETICALLY ACTIVATED
- \* MERCURY CONTACTOR

\* LIFE CYCLE ENDURANCE TESTS: U.L. 508 @ 100,00 & CSA 22.2 @ 250,000 CYCLES

Contactors - Relays - Switches