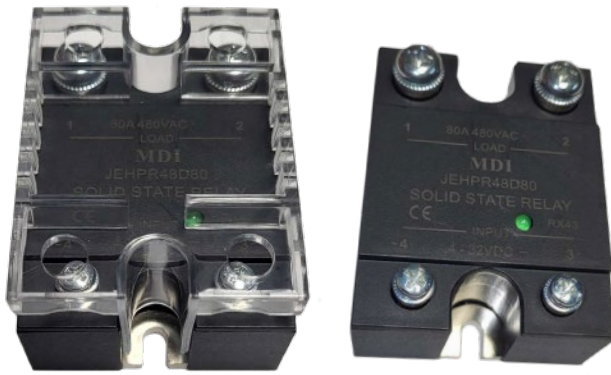


Type JEHPR48D80 Solid State Relay

MDI



- Zero switching
- LED indication
- Clip-on IP 20 protection cover
- Self-lifting terminals
- Housing free of moulding mass
- Transient Voltage: 1200V_p
- Input range: 4-32 VDC
- Operational ratings: Up to 80 AMPS rms
- Rated voltage: 480 VAC rms

Product Description

The industrial, 1-phase relay with anti parallel thyristor output is the most widely used industrial SSR due to its multiple application possibilities. The relay can be used for resistive, inductive and capacitive loads. The zero switching relay switches ON when the sinusoidal curve crosses zero and switches OFF when the current crosses zero.

The instant-on relay with DC control input can be used for phase control. The built in varistor secures transient protection for the heavy industrial applications, and the LED indicates the status of the control input. The clip on cover is securing touch protection to IP20. Protected output terminals can handle cables up to 16mm² (6 AWG).

Output Specifications

Rated operational current TA=25°C	80 AMPS rms
Load Current Range	80 AMPS rms
Max. Surge Current (10 ms)	1250 Apk
Max. Off-State Leakage Current	10 mA
Max. I ² t for fusing (10 ms, A ² S)	7800
Max. On-State Voltage Drop	1.7 Vrms
Min. Off-State DV/DT	500V/μs

Input Specifications

Control voltage range	4 - 32 VDC
Max. Turn-On Voltage @ Ta = 25°C	4 VDC
Max. Reverse Protection Voltage	-32 vdc
Max. Turn-Off Voltage	1 VDC
Max. Input Current	25 mA
Max. Turn-On Time	1/2 cycle + 1ms
Max. Turn-Off Time	1/2 cycle + 1ms

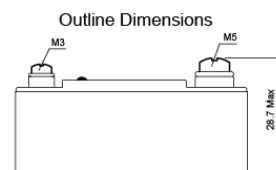
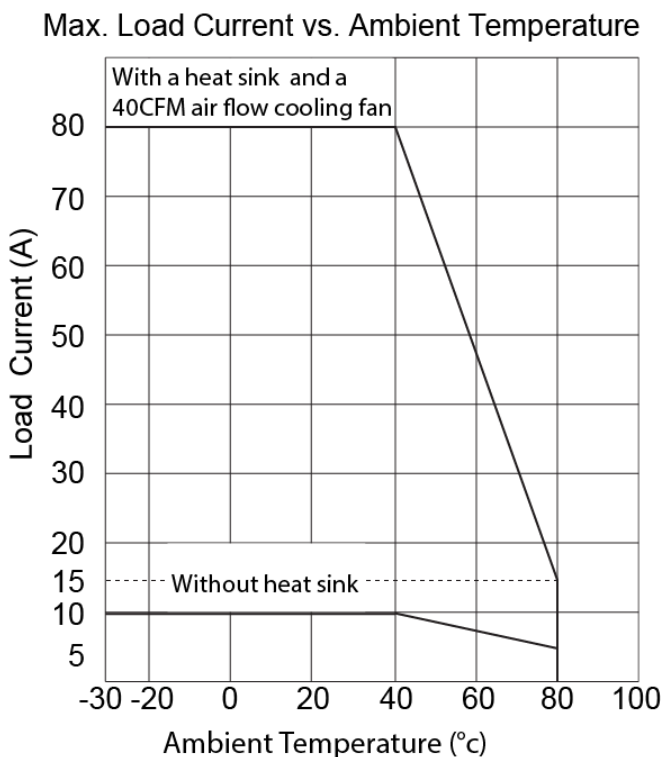
General Specifications

Operational voltage range	48 to 530 VAC rms
Max. Transient Voltage	1200 V _{pk}
Load Current Range	80 Arms
Operational frequency range	47 to 63 Hz
Power factor	0.5
CE-marking	Yes

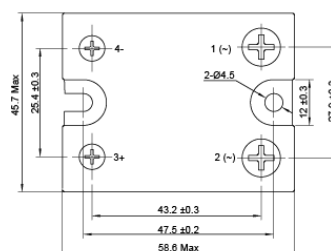
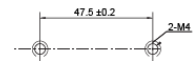
Thermal Specifications

Operating temperature range	-30° to 80°C (-22° to 126°F)
Storage temperature range	-30° to 100°C (-22° to 212°F)

Dimensions



Mounting Holes



Wiring Diagram

