



MERCURY DISPLACEMENT INDUSTRIES, INC.

Post Office Box 710 - U.S. 12 East - Edwardsburg, Michigan 49112-0710

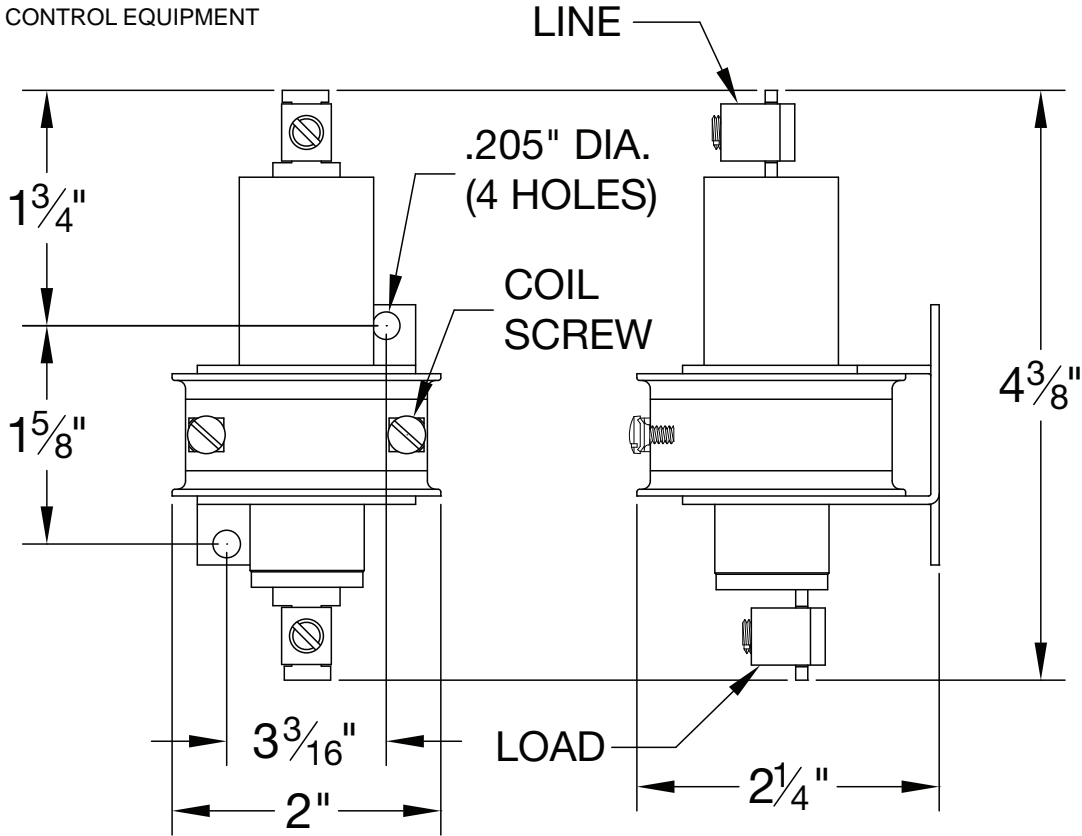
Phone (269) 663-8574 - Fax (269) 663-2924

(800) 634-4077



L35NO-24D

INDUSTRIAL CONTROL EQUIPMENT



* CONTACT RESISTANCE .003 ohms

* TEMPERATURE RANGE -35° TO +85° C

* DIELECTRIC WITHSTAND 2,500 VAC RMS

* COIL TERMINALS #6 BINDING HEAD SCREWS TORQUE TO 7 IN-LB

* OPERATE TIME 50 MILLISECONDS

* LOAD TERMINALS 4-14 A.W.G. COMPRESSION TYPE TORQUE TO 31.5 IN-LB

* RELEASE TIME 80 MILLISECONDS

* RATINGS:

* SINGLE POLE / SINGLE THROW

CONTACTS: 35 AMP @ 600 VAC
RESISTIVE

* MAGNETICALLY ACTIVATED

COIL: 24 V.D.C.

CURRENT: 135mA

RESISTANCE: 188Ω

* MERCURY CONTACTOR

VA: 3.3 WATTAGE: 3.3

* LIFE CYCLE ENDURANCE TESTS: U.L. 508 @ 100,00 & CSA 22.2 @ 250,000 CYCLES

Contactors - Relays - Switches

<http://www.mdius.com>

J.J.S. 08-04-09
rev. A 11-16-09