

Internal Start Components



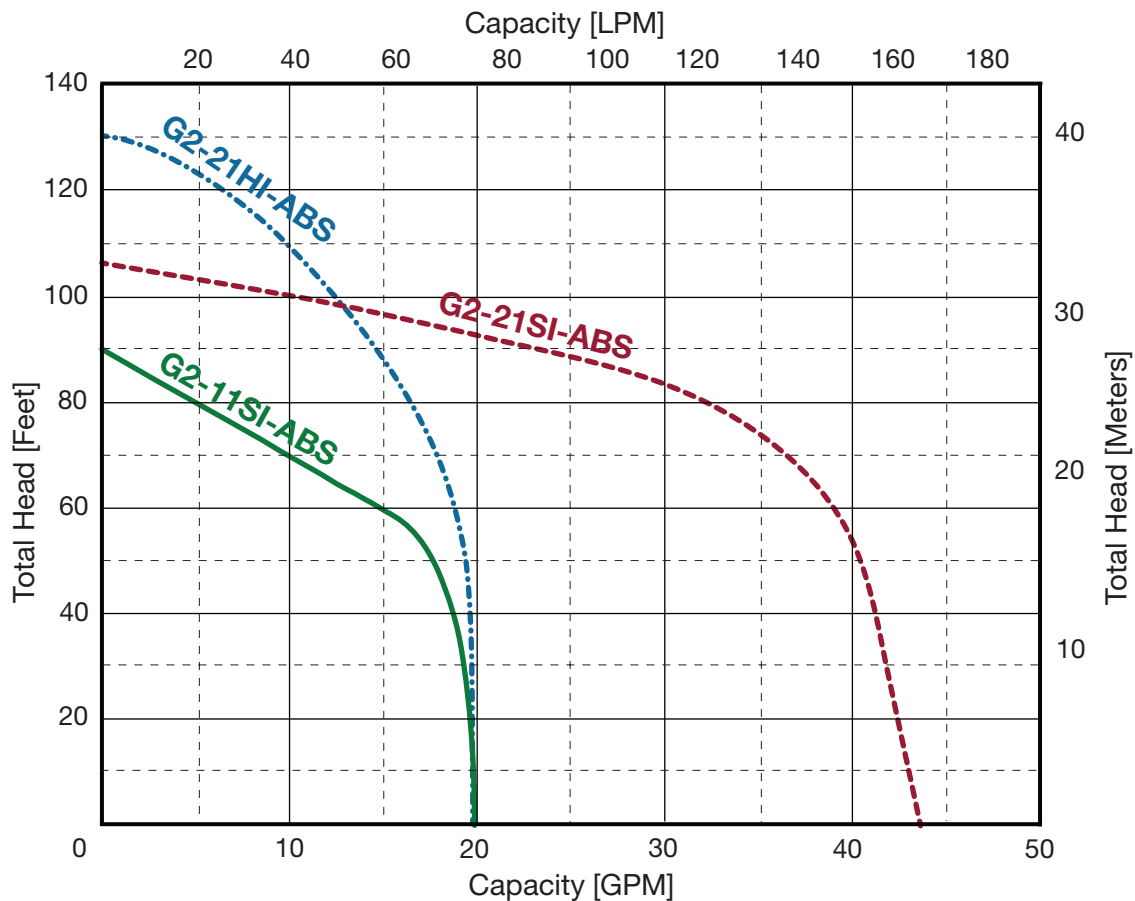
The MDI ABS Retrofit grinder pumps easily handle residential, light commercial or industrial sanitary waste, reducing it to fine slurry. The **G2-...I-ABS Series** pump is designed for use in pressure sewer applications or any piping network.

The recessed vortex impeller design of the **G2-...I-ABS Series** grinder pump provides trouble free, non-overloading operation over the entire performance curve. The **G2-...I-ABS Series** pump produces capacities up to 43 gpm with heads up to 130 feet.

The modular design provides quick access to the internal start capacitor kit. Hardened stainless steel grinder assembly and many quality features.

Some of the other **G2-...I-ABS Series** pump features:

- **G2-11SI-ABS** - Strong, 2 HP, 115 V motor @ 16.9 AMPS
- **G2-21SI-ABS (G2-21HI-ABS)**
 - Strong, 2 HP, 208/230 V motor @ 14/12.8 AMPS
- **Internal start component** (no control box required)
- Potted cord cap assembly
- Dual silicon carbide shaft seals
- 3 Bearings
- Pressed in motor
- 27.5 x 8.25 x 10.75 with 1.25" NPT Removable Discharge Flange



1. Triple Sealed Cable Entrance

Stainless steel strain relief cord grip with compression grommet protects outer cord jacket. Epoxy filled inner cord cap with individually soldered wires provide anti-wicking moisture protection to the motor even if power cable is cut or damaged.

2. Internal Start Kit

Start / Run capacitor with relay securely positioned in dry compartment. Rubber compression grommet for wire leads to motor prevents oil from entering chamber. 4 bolts quickly removes cord cap for easy servicing.

3. Modular Pump Design

Commonality of parts across the pump product line minimizes the amount of parts required for servicing. Heavy duty ASTM A48, Class 30 cast iron components.

4. Strong Motor

High torque for powerful and reliable pump operation. Pressed stator securely holds motor and efficiently transfers heat. Class F insulation with overload protection in oil filled chamber for cool operation and long motor life.

5. 3-Bearing Support

Motor / Pump shaft securely held with upper and lower ball bearing plus addition sleeve bearing in lower seal chamber. Long 50,000 hour B-10 bearing life.

6. Double Mechanical Seal Protection

Dual silicon carbide mechanical shaft seals provide twice the moisture protection for the motor. Dual seals are housed in a secondary oil filled seal chamber. Tougher silicon carbide seals better handles sand, grit and abrasive materials.

7. Non-Overloading Hydraulic Design

The recessed centrifugal impeller allows 100% performance curve operation from shut-off to maximum flow without damage to the pump or system. The recessed vortex impeller is out of the passageway of fluid flow, eliminating concerns of blockage or wear.

8. Proven Grinder Assembly

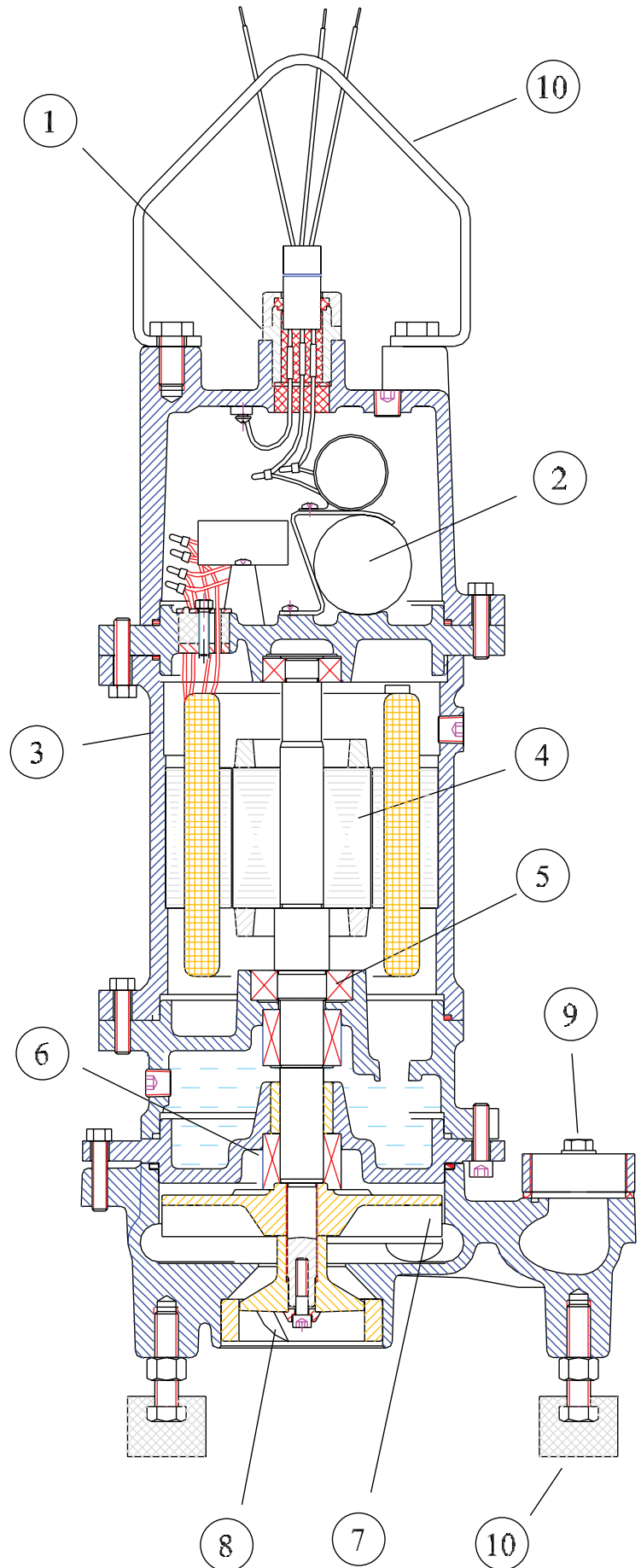
Hardened (Rockwell 56-60) stainless steel grinder assembly has 30+ years proven field experience. The reversible grinder ring and grinder impeller effectively reduces solids into a fine slurry, easily passable in a piping system without concerns of clogging. Highly efficient G2-11SI-ABS & G2-21HI-ABS 7,400 (G2-21SI-ABS 16,600) cuts per second.

9. Easy Piping Connection

Removable 1-1/4" NPT connection flange for simple and easy connection to discharge piping.

10. Accessories Included

Stainless steel lifting handle and anti-vibration rubber mounting feet are included with the pump.



External Start Components



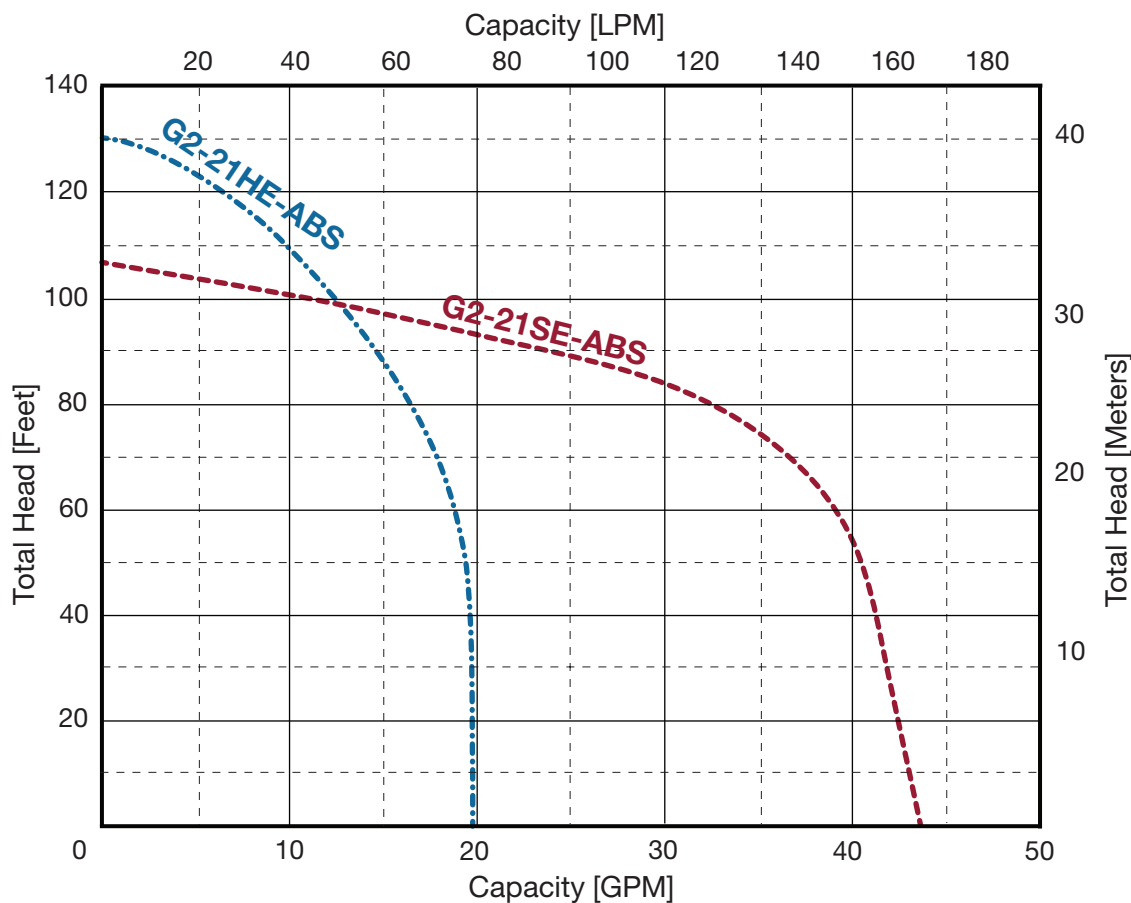
The MDI ABS Retrofit grinder pumps easily handle residential, light commercial or industrial sanitary waste, reducing it to fine slurry. The **G2-21SE-ABS (G2-21HE-ABS)** pump is designed for use in pressure sewer applications or any piping network.

The recessed vortex impeller design of the **G2-21SE-ABS (G2-21HE-ABS)** grinder pump provides trouble free, non-overloading operation over the entire performance curve. The **G2-21SE-ABS** pump produces capacities to 43 gpm with heads to 106 feet (**G2-21HE-ABS** produces 20 gpm to 130 gpm).

The **G2-21SE-ABS (G2-21HE-ABS)** grinder pump retrofits into many existing competitor pump installations. The **G2-21SE-ABS (G2-21HE-ABS)** pump operates with the same control panel and installation piping / rail system.

Some of the other **G2-21SE-ABS (G2-21HE-ABS)** series pump features:

- Interchangeable into competitor installations
- Dual mechanical seals (silicon carbide)
- Class H motor, internal overload protection
- 3 Bearing shaft support
- Internal moisture detection
- Strong, 2 HP motor 208 V @ 14 AMPS / 230 V @ 12.8 AMPS



1. Triple Sealed Cable Entrance

Stainless steel strain relief cord grip with compression grommet protects outer cord jacket. Epoxy filled inner cord cap with individually soldered wires provide anti-wicking moisture protection to the motor even if power cable is cut or damaged.

2. Modular Pump Design

Commonality of parts across the pump product line minimizes the amount of parts required for servicing. Heavy duty ASTM A48, Class 30 cast iron components.

3. Strong Motor

High torque for powerful (208/230 V) and reliable pump operation. Pressed stator securely holds motor and efficiently transfers heat. Class F insulation with overload protection in oil filled chamber for cool operation and long motor life.

4. 3-Bearing Support

Motor / Pump shaft securely held with upper and lower ball bearing plus addition sleeve bearing in lower seal chamber. Long 50,000 hour B-10 bearing life.

5. Double Mechanical Seal Protection

Dual silicon carbide mechanical shaft seals provide twice the moisture protection for the motor. Dual seals are housed in a secondary oil filled seal chamber. Tougher silicon carbide seals better handles sand, grit and abrasive materials.

6. Moisture Detection

Seal leak probe signals alarm in control panel for scheduled maintenance.

7. Non-Overloading Hydraulic Design

The recessed centrifugal impeller allows 100% performance curve operation from shut-off to maximum flow without damage to the pump or system. The recessed vortex impeller is out of the passageway of fluid flow, eliminating concerns of blockage or wear.

8. Proven Grinder Assembly

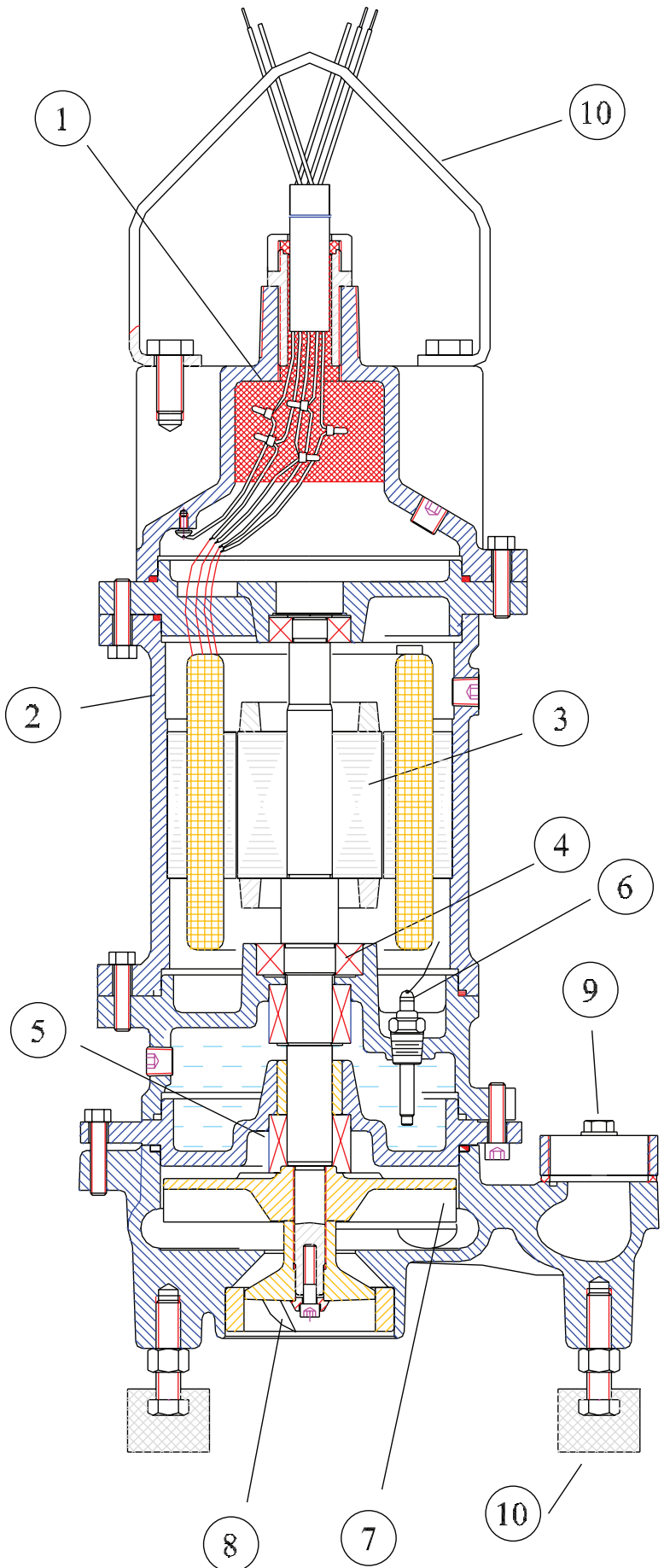
Hardened (Rockwell 56-60) stainless steel grinder assembly has 30+ years proven field experience. The reversible grinder ring and grinder impeller effectively reduces solids into a fine slurry, easily passable in a piping system without concerns of clogging. Highly efficient 16,600 (G2-21HI-ABS 7,400) cuts per second.

9. Easy Piping Connection

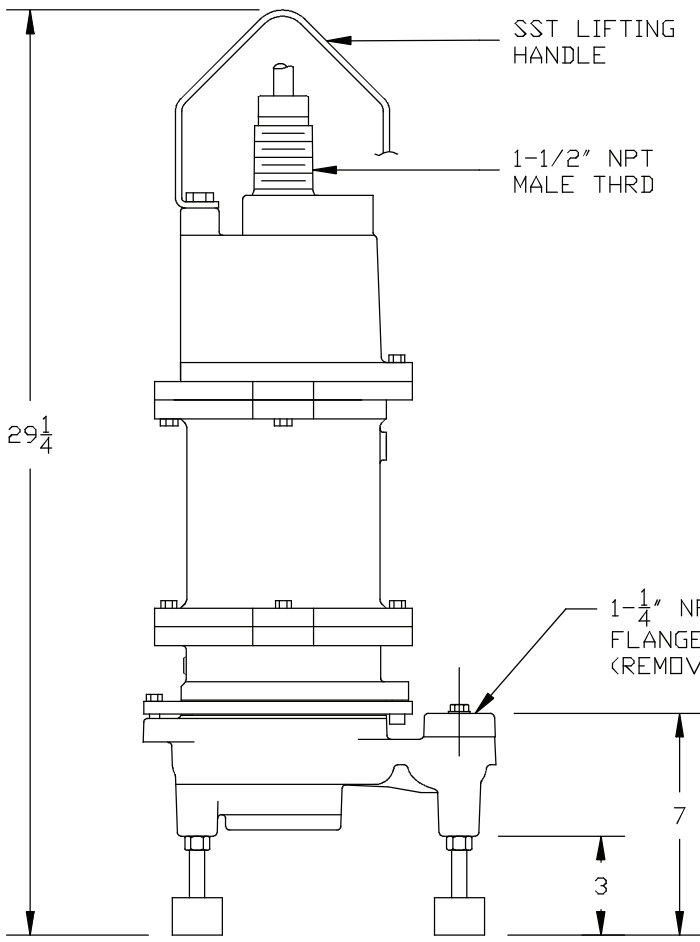
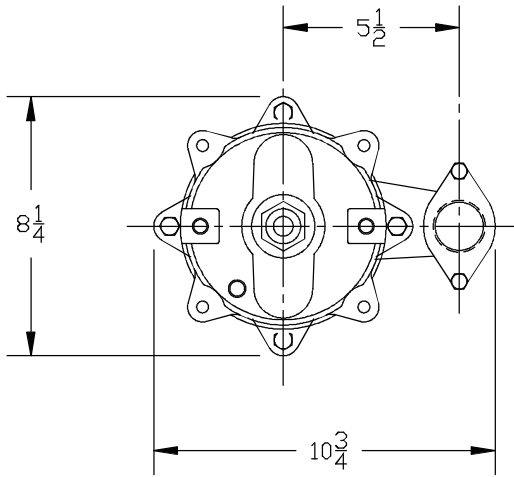
Removable 1-1/4" NPT connection flange for simple and easy connection to discharge piping.

10. Accessories Included

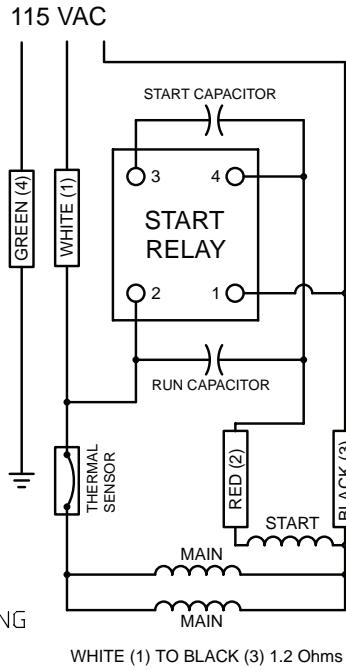
Stainless steel lifting handle and anti-vibration rubber mounting feet are included with the pump.



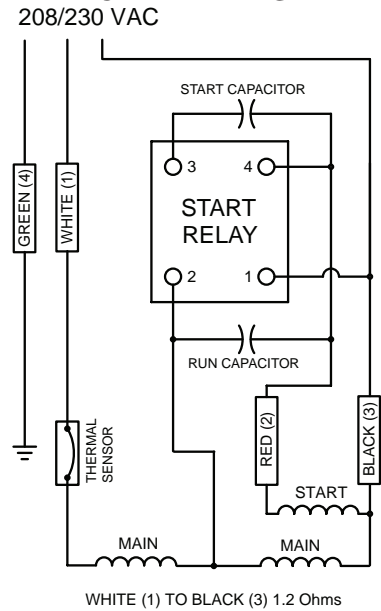
Rev.	Description	Date	By	E-Ch#



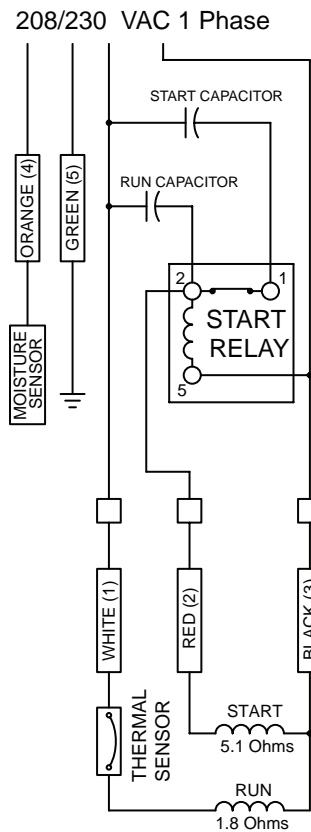
G2-11SI-ABS



**G2-21SI-ABS
G2-21HI-ABS**



**G2-21SE-ABS
G2-21HE-ABS**



Mercury Displacement Industries, Inc.

Ph (269) 663-8574; Fax (269) 663-2924; www.mdious.com
P.O. Box 710; 25028 US 12 East, Edwardsburg, MI 49112

Title: G2 GRINDER PUMP OUTLINE

Scale: NONE

Iss. by: J.J.S.

Checked By: --

Date: 03-23-17

--

Tolerances Unless Otherwise Specified
.XXX = ±.005 .XX = ±.020 ANGLE = ±1°

Dwg. No. G2 SERIES